



*La référence en surfaces
synthétiques*

www.lmlpaysagiste.com

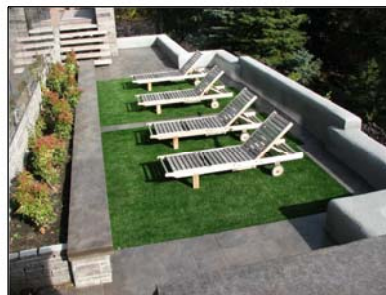
Installation Guide

L.M.L. Paysagiste et Frères Inc. is a family-owned business founded in Quebec in 1951, specialized in landscaping and civil engineering construction. Since 2003, it has become a leader in building athletic fields as well as supplying and installing synthetic turf.

L.M.L. Paysagiste et Frères Inc. is the authorized distributor of one of the largest synthetic turf manufacturers for Quebec and the Ottawa region.



Residential landscaping



Patios



Rest areas



Playground



Dog parks



La référence en surfaces
synthétiques

www.lmlpaysagiste.com

page 1/5

Installation Guide

Basic Equipment

- Wood / iron stakes
- Masonry rope
- Shovel
- Wheelbarrow
- Vibratory plate compactor
- Drill
- Level
- Tape measure
- Bow rake
- Caulking gun
- Blowtorch
- Metal trowel and glue
- Small tire hammer
- X-acto knife
- Square / ruler
- Marking paint

Preparation

Before commencing work, survey the existing construction zone conditions and draft the layout. This step is important in order to determine the quantities of materials necessary to complete the project.

Layout

Using wooden stakes and rope, stake out the area to be built. Place the stakes beyond the area to form a crossing of the ropes above the projected ends. Use marking paint to lay out curvilinear shapes and a stake to identify the center of the curve radii.

Remove peat and / or existing surface according to the planned layout.

Excavation

Before excavating, take care to identify the infrastructure elements in the work area (pipes, electricity, drains, etc.). Modify existing infrastructures if they conflict with the planned excavation depth.

Excavate the area to a depth of 150mm (6") and compact the subgrade using a roller or other suitable equipment.

Installation of LML TURF GEO geotextile membrane

Unroll geotextile membrane and cut strips to the lengths required to cover the entire area to be built. Install membrane by overlapping the strips over a width of at least 300mm (12").

Installation of LML SAFE EDGE FLEX borders

Form a base with the granite stone to receive the borders, following the planned layout. Level and lightly compact the stone. Lay and align the SAFE EDGE FLEX edges and corners on the stone layer to create



La référence en surfaces
synthétiques

www.lmlpaysagiste.com

page 2/5

Installation Guide

the perimeter of the surface. If necessary, saw the edges to precise lengths, and drill a hole at the cut ends to a depth of at least 50mm (2") on either side to insert a plastic dowel. Refer to supplier's assembly details. Once in place, bond the edges and corners with MAPEI ULTRABOND PU-1K adhesive, as indicated on assembly drawings. Drive the 250mm (10") nails into the holes identified on the parts. Use as many nails as necessary to ensure stability and maintain curvature of the edges. Let dry 24 hours before filling with granite stone. When edges and corners are set along an existing foundation or wall, cut the top strip to leave room for the synthetic turf.

LML granite stone filling and levelling

Place the granite draining stone inside the area, taking into account the final positioning of the synthetic turf. Refer to installation details. If required, fill excavated area with granite stone up to the edges or according to the thickness of the absorbent underlay. Level and lightly compact the granite stone.

LML SECURI-MOUSSE absorbent underlay

The absorbent underlay, available in 1"- and 2" thicknesses, is used to create a springy, more comfortable surface. When installing playground equipment, it is important to consider the potential fall from a height when choosing the total thickness of the underlay. Ask your supplier for information on the thickness required to cushion impact from falls.

To minimize waste and optimize distribution of panels within the area, create an installation plan for the absorbent surface. Position the underlay by arranging the panels in an interlocking pattern and connect the panels to each other using adhesive tape, as recommended by the supplier; this will hold them in place when the synthetic turf is installed. If installing more than one layer, avoid duplicating the same nesting pattern to allow for overlapping of joints.

LML synthetic turf

Synthetic turf is available in rolls of 3658mm or 4572mm (12' or 15') wide by 30.48m (100') in length. See supplier for information on the various synthetic grass products available for your project.

IMPORTANT: Create an installation plan in order to minimize number of joints and waste of materials. Refer to supplier installation instructions.

Unroll the turf on a flat surface near the work area. Allow the material to relax in order to smooth any folds caused by rolling. Locate the direction of the grain to ensure that each strip of turf is assembled in the same direction.



La référence en surfaces
synthétiques

www.lmlpaysagiste.com

page 3/5

Installation Guide

Jointing

Method 1: Line up strips side by side and fold liner over the entire length to insert the pre-glued LML TURF TAK tape. Heat strip using a torch or appropriate equivalent, and join strips together to form the tightest and straightest joint possible.

Method 2: Line up strips side by side and fold liner over the entire length to insert 6"-wide white bonding strip. Using a trowel, apply MAPEI ULTRABOND PU-1K one-compound adhesive to entire surface of bonding strip and join turf strips together to form the tightest and straightest joint possible.

It is best to do this with the help of another person to ensure joints are true. Let dry 24 hours, weighing down joints with planks and/or sandbags. Once ready, place synthetic turf surface on work area. Allow surface to extend beyond curved or curvilinear borders.

Cut off excess material and glue carpet to edge, using PU-1K adhesive with caulking gun. Apply the adhesive to the entire width of the edges and let dry for 24 hours, weighted by planks and / or sandbags.

FACILI FLOW drainage tile

To install synthetic turf on hard surfaces such as concrete or wooden balconies, asphalt, or paving, use FACILI FLOW drainage tiles as an underlay. Tiles are available in a 1219mm x 1067mm (48" x 42") size and interlock with each other. If required, cut pieces from tile to fit around fixed objects located in the area to be covered. Mark off work area and put plastic bands around entire perimeter. Make sure surface is clean and smooth. Fix strips to the surface with PU-1K adhesive, leaving a space of no more than 12mm (1/2") between sections to allow proper drainage. Install drainage underlay and synthetic surface, referring to supplier instructions. Let perimeter dry for 24 hours, weighted by a plank and / or sandbags.

LML TPE ENVIRO SAFE FILL filler granules (optional)

If desired, the synthetic turf can be filled with LML TPE ENVIRO SAFE FILL granules to make the surface appear more dense. Spread granules over entire surface, taking care to fill between turf fibers. Using a broom, brush the surface in different directions to distribute granules evenly.

MULTI-FLOW drainage system (optional)

According to site conditions, effective drainage and surface longevity can be achieved by using the MULTI-FLOW drainage system. Ask your supplier for information and products required by your project.



*La référence en surfaces
synthétiques*

www.lmlpaysagiste.com

page 4/5

Installation Guide

Maintenance

Cleaning should be undertaken regularly, and generally consists of removing all debris that accumulate on the surface by brushing, blowing, or vacuuming.

As they are trampled on, the synthetic fibers that make up the surface tend to flatten. Brushing, which consists of straightening the fibers using a broom or rotating stiff nylon brushes, should be done as needed.



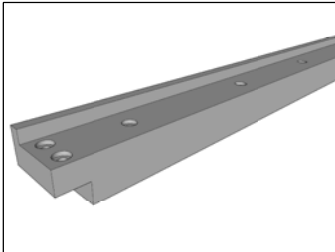


La référence en surfaces
synthétiques

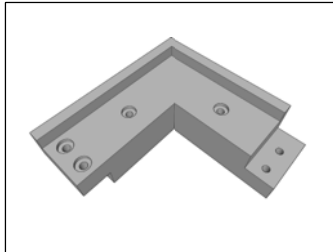
www.lmlpaysagiste.com

page 5/5

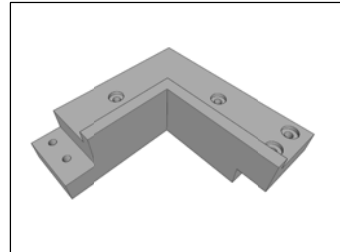
Available Products



LML SAFE EDGE FLEX border



LML SAFE EDGE FLEX outer corner



LML SAFE EDGE FLEX inner corner



LML TURF GEO membrane



MAPEI Ultrabond Turf PU-1K,
tube and strips



MAPEI Ultrabond Turf PU-1K
adhesive and strips



Adhesive tape



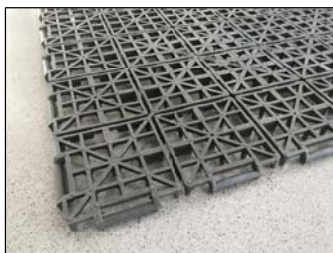
Nails, 10 inches



LML granite stones



LML SECURI-MOUSSE underlay



FACILI-FLOW drainage tile



MULTI-FLOW system



*La référence en surfaces
synthétiques*

www.lmlpaysagiste.com

List of Installation Details

- LML-01 LML SAFE EDGE FLEX Border System
- LML-02 LML SAFE EDGE FLEX Border System
- LML-03 Standard Installation and junction with flexible surfaces
- LML-04 Standard Installation and junction with hard surfaces
- LML-05 Standard Installation and junction with foundations
- LML-06 Installation with 1" or 2" absorbent underlay
- LML-07 Installation for draining athletic mini-surfaces
- LML-08 Installation for draining athletic mini-surfaces (cont'd)
- LML-09 Installation for hard outdoor surfaces
- LML-10 Installation for gym surfaces
- LML-11 Standard installation of golf hole cups
- LML-12 Logos for playgrounds and daycares

NOTE

Please review installation guide for steps to creating synthetic surfaces.

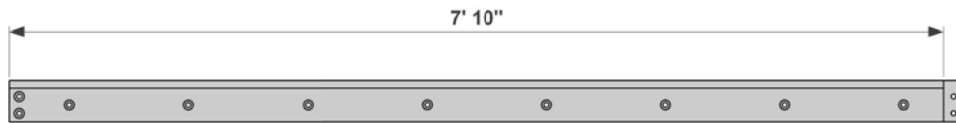


La référence en surfaces
synthétiques

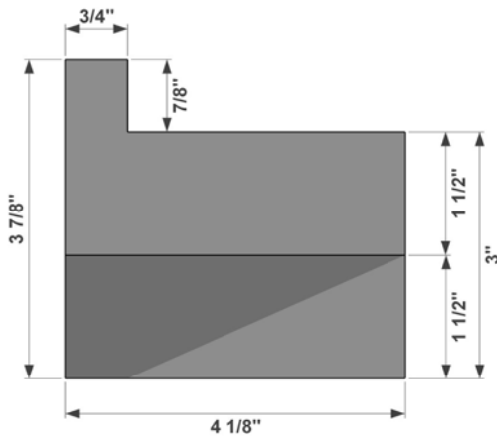
www.lmlpaysagiste.com

LML-01

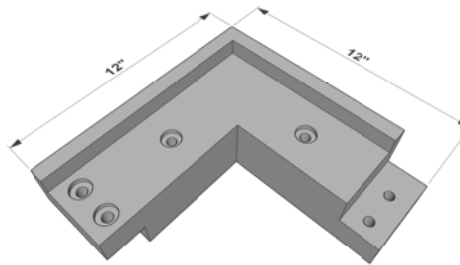
LML SAFE EDGE FLEX Border System



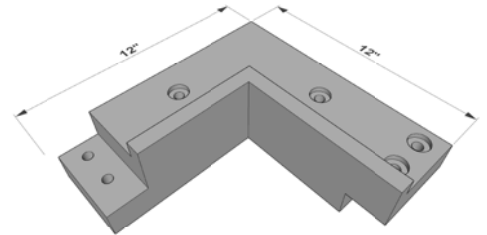
Border (top view)



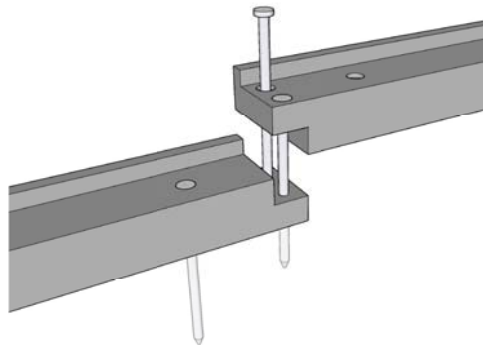
Border (front view)



Outer corner (90 degrees)

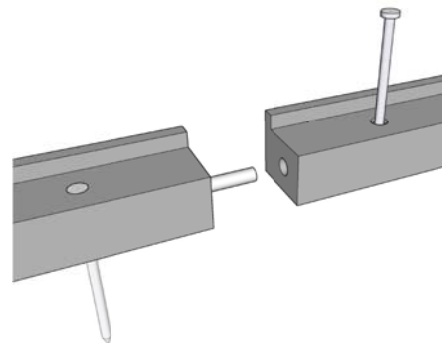


Inner corner (90 degrees)



Assembly with 10" nail

Borders are assembled with MAPEI PU-1K adhesive and 10" nails



Assembly with sections and dowels

Borders are cut into sections and assembled with MAPEI PU-1K adhesive and 5/8" diameter plastic dowels



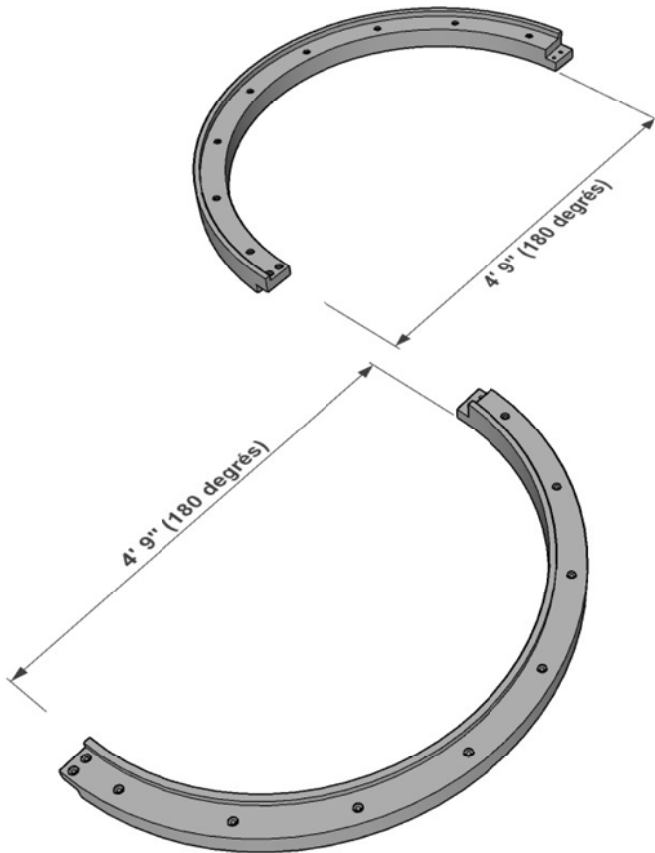
La référence en surfaces
synthétiques

www.lmlpaysagiste.com

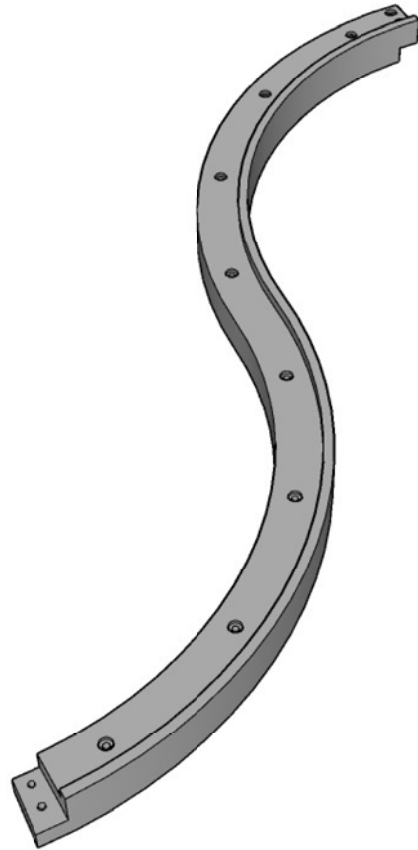
LML-02

LML SAFE EDGE FLEX Border System

Outer curve



Inner curve



Curvilinear shape

NOTE

Borders are flexible and may be used
with flowerbeds and pool contours.



La référence en surfaces
synthétiques

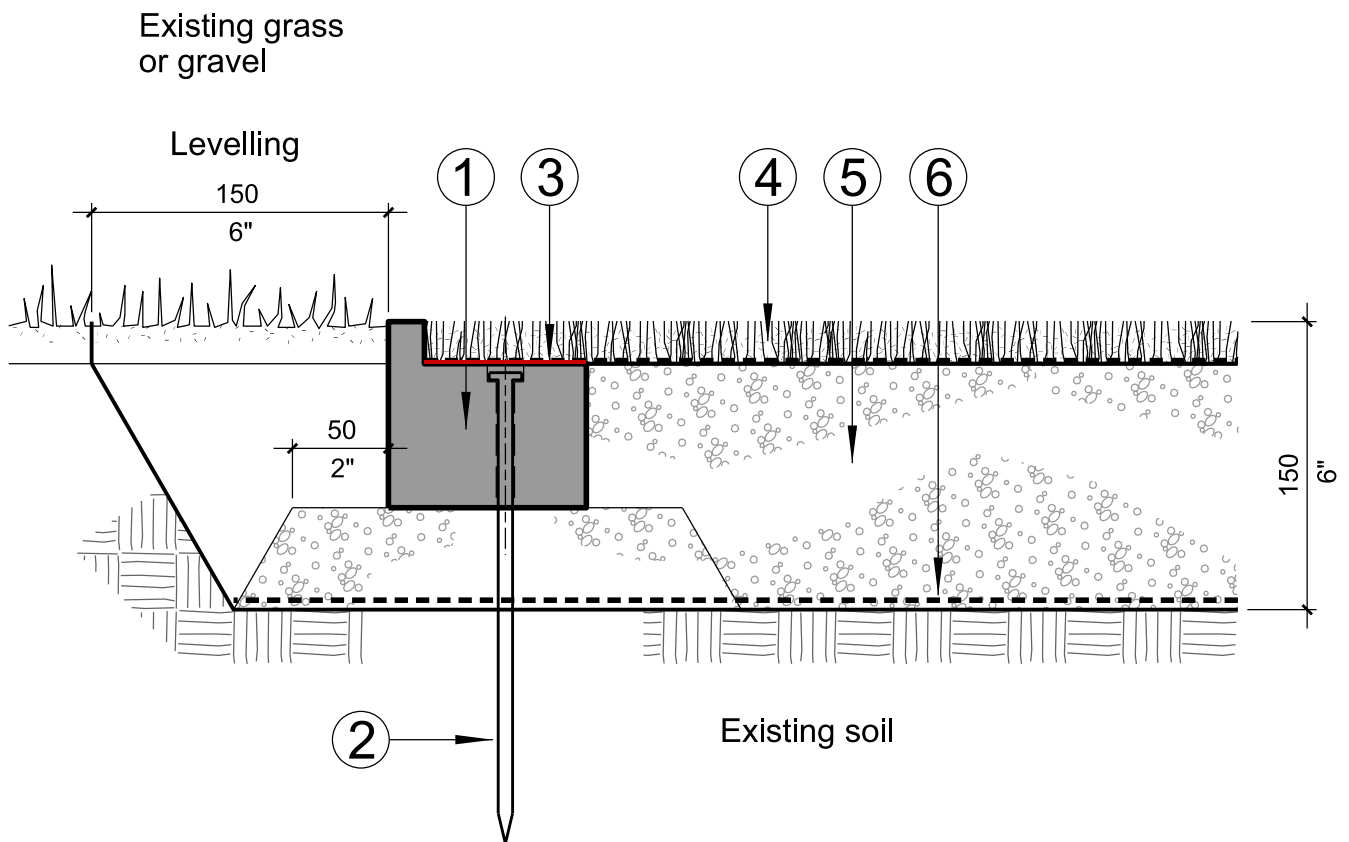
www.lmlpaysagiste.com

LML-03

Standard installation and junction with flexible surfaces

Description

- 1 LML SAFE EDGE FLEX flexible border
- 2 10" anchoring nails
- 3 MAPEI PU-1K adhesive
- 4 LML synthetic turf
- 5 LML granite stones
- 6 LML TURF GEO geotextile membrane





La référence en surfaces
synthétiques

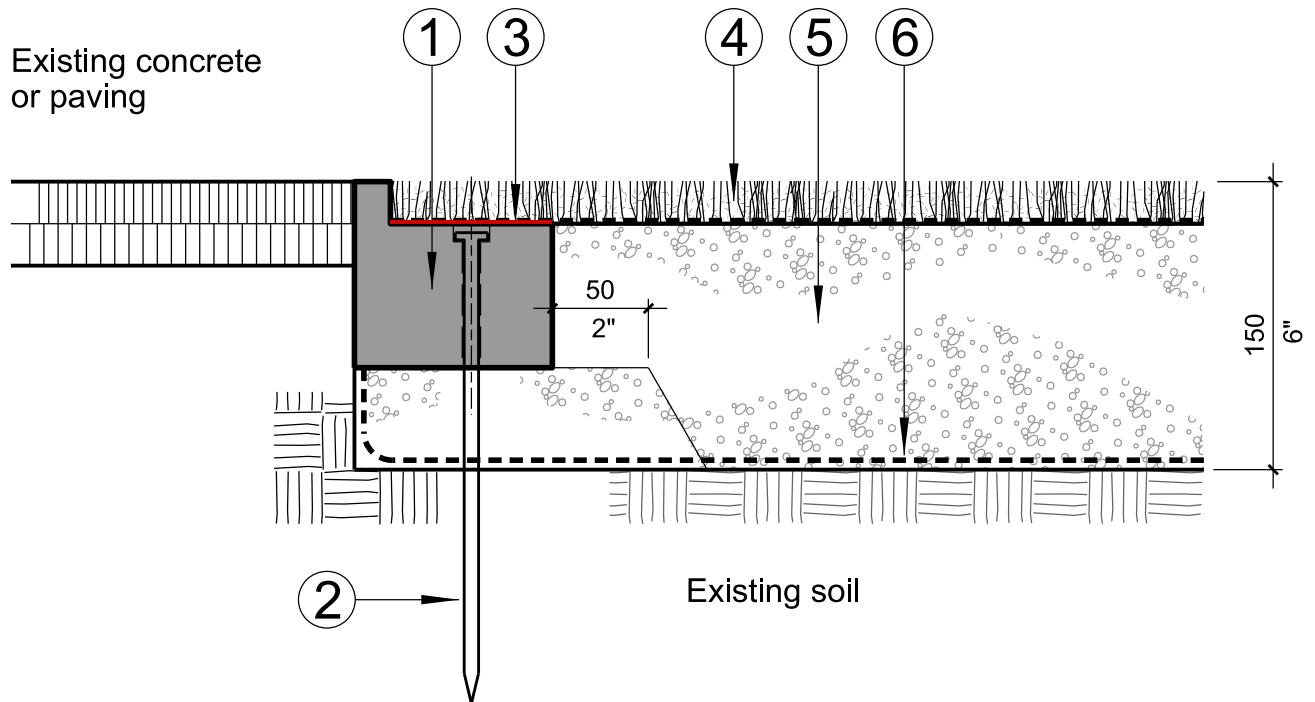
www.lmlpaysagiste.com

LML-04

Standard installation and junction with hard surfaces

Description

- 1 LML SAFE EDGE FLEX flexible border
- 2 10" anchoring nails
- 3 MAPEI PU-1K adhesive
- 4 LML synthetic turf
- 5 LML granite stones
- 6 LML TURF GEO geotextile membrane





La référence en surfaces
synthétiques

www.lmlpaysagiste.com

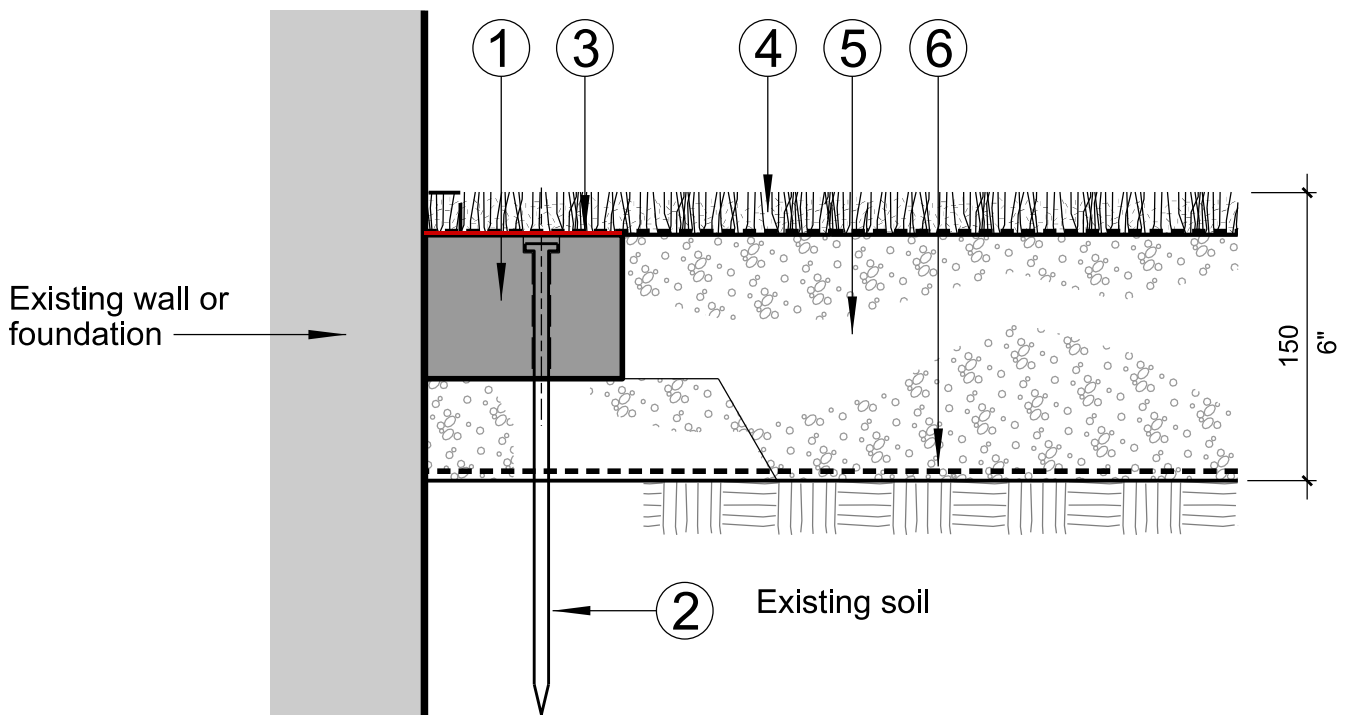
LML-05

Standard installation and junction with fondations

Description

- 1 LML SAFE EDGE FLEX flexible border
- 2 10" anchoring nails
- 3 MAPEI PU-1K adhesive
- 4 LML synthetic turf
- 5 LML granite stones
- 6 LML TURF GEO geotextile membrane

NOTE : cup upper edge of border





La référence en surfaces
synthétiques

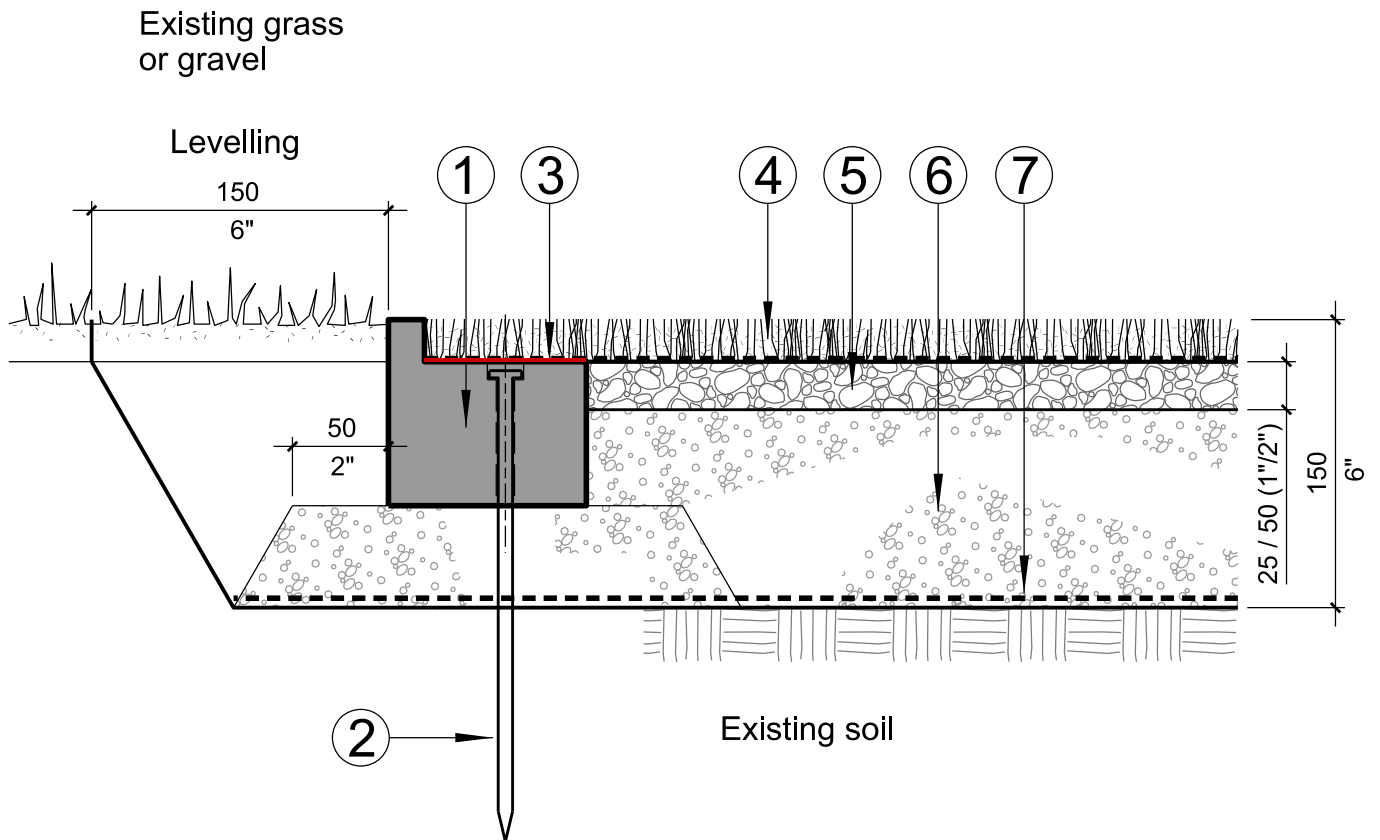
www.lmlpaysagiste.com

LML-06

Installation with 1" / 2" absorbent underlay

Description

- 1 LML SAFE EDGE FLEX flexible border
- 2 10" anchoring nails
- 3 MAPEI PU-1K adhesive
- 4 LML synthetic turf
- 5 LML SECURI-MOUSSE absorbent underlay
- 6 LML granite stones
- 7 LML TURF GEO geotextile membrane





La référence en surfaces
synthétiques

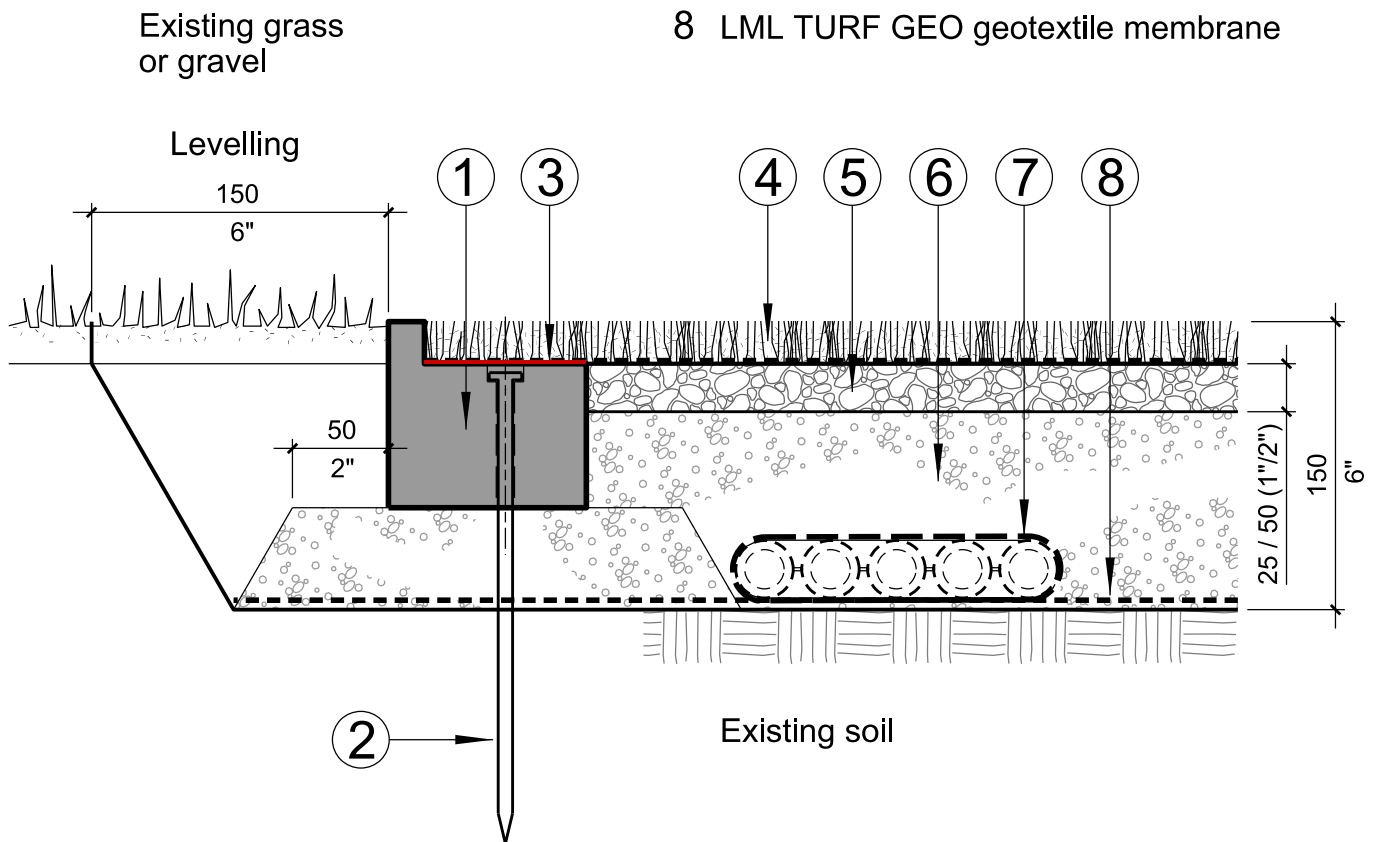
www.lmpaysagiste.com

LML-07

Installation for draining athletic mini-surfaces

Description

- 1 LML SAFE EDGE FLEX flexible border
- 2 10" anchoring nails
- 3 MAPEI PU-1K adhesive
- 4 LML synthetic turf
- 5 LML SECURI-MOUSSE absorbent underlay
- 6 LML granite stones
- 7 MULTI-FLOW drain (6")
- 8 LML TURF GEO geotextile membrane





La référence en surfaces
synthétiques

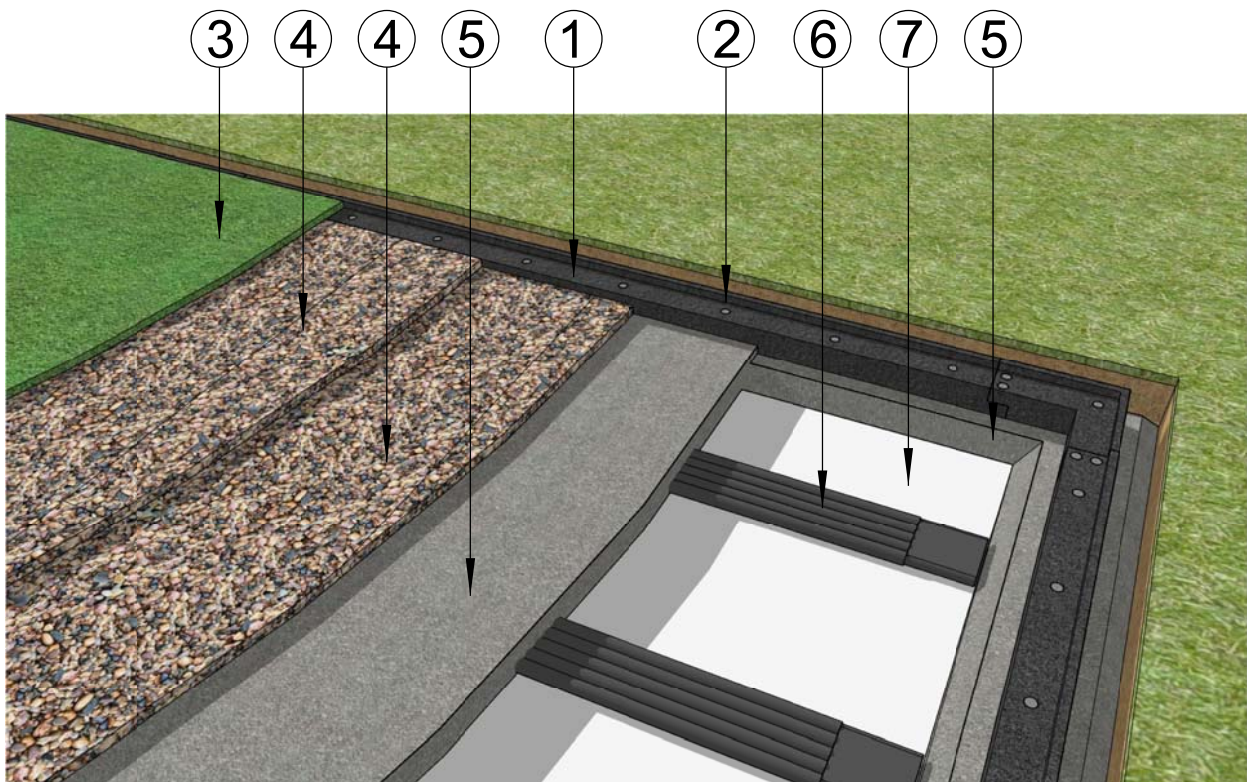
www.lmlpaysagiste.com

LML-08

Installation for draining athletic mini-surfaces (cont'd)

Description

- 1 LML SAFE EDGE FLEX flexible border
- 2 10" anchoring nails
- 3 LML synthetic turf
- 4 LML SECURI-MOUSSE absorbent underlay
- 5 LML granite stones
- 6 MULTI-FLOW drain (6")
- 7 LML TURF GEO geotextile membrane



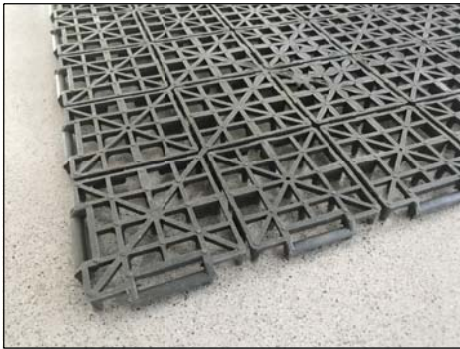


La référence en surfaces
synthétiques

www.lmlpaysagiste.com

LML-09

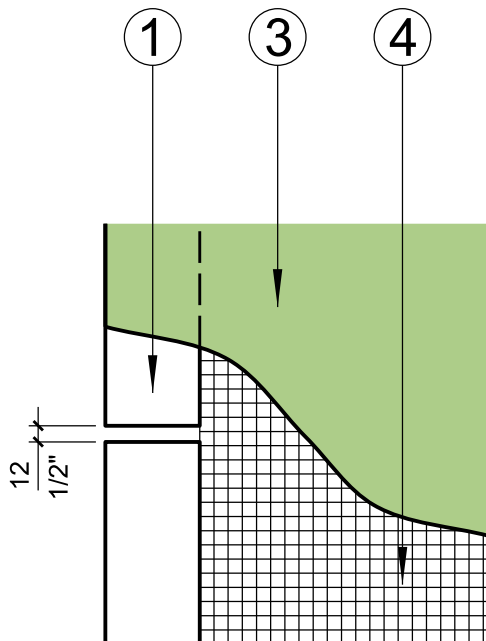
Installation for hard outdoor surfaces



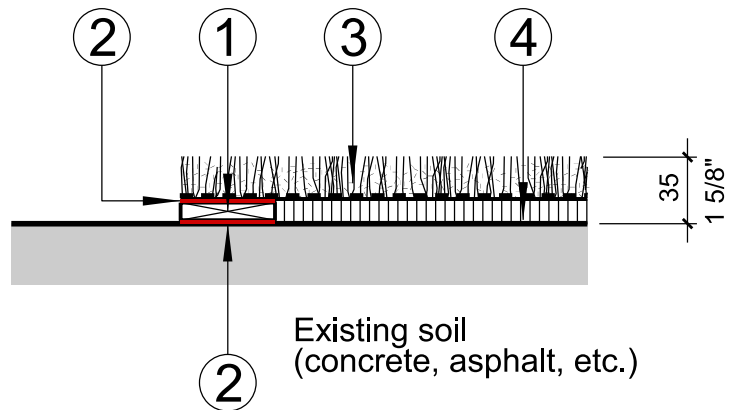
FACILI-FLOW tile

Description

- 1 Plastic strip 13 x 50mm (1/2" x 2")
- 2 MAPEI PU-1K adhesive
- 3 LML synthetic turf
- 4 FACILI-FLOW draining tile



Top view



NOTE

Ensure a 12mm (1/2") spacing between plastic strips to facilitate drainage.



La référence en surfaces
synthétiques

www.lmlpaysagiste.com

LML-10

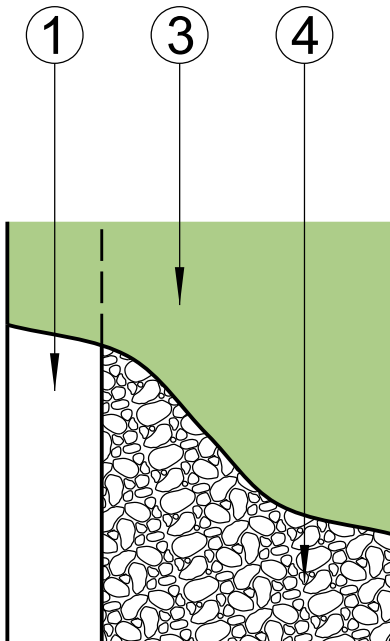
Installation for gym surfaces



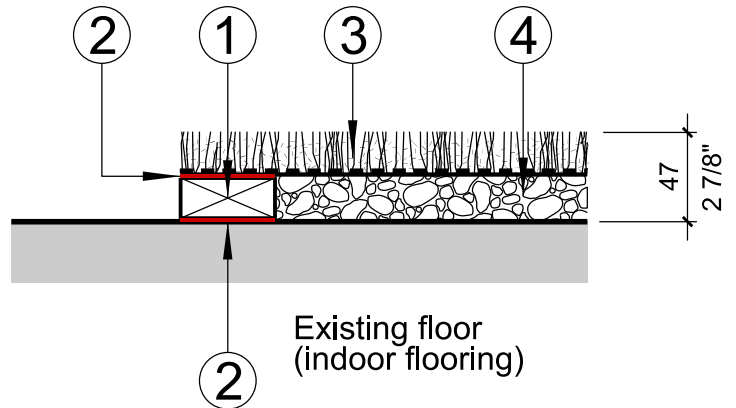
LML SECURI-MOUSSE
absorbent underlay

Description

- 1 Plastic strip 25 x 50mm (1" x 2")
- 2 MAPEI PU-1K adhesive
- 3 LML synthetic turf
- 4 LML SECURI-MOUSSE absorbent underlay



Top view





La référence en surfaces
synthétiques

www.lmlpaysagiste.com

LML-11

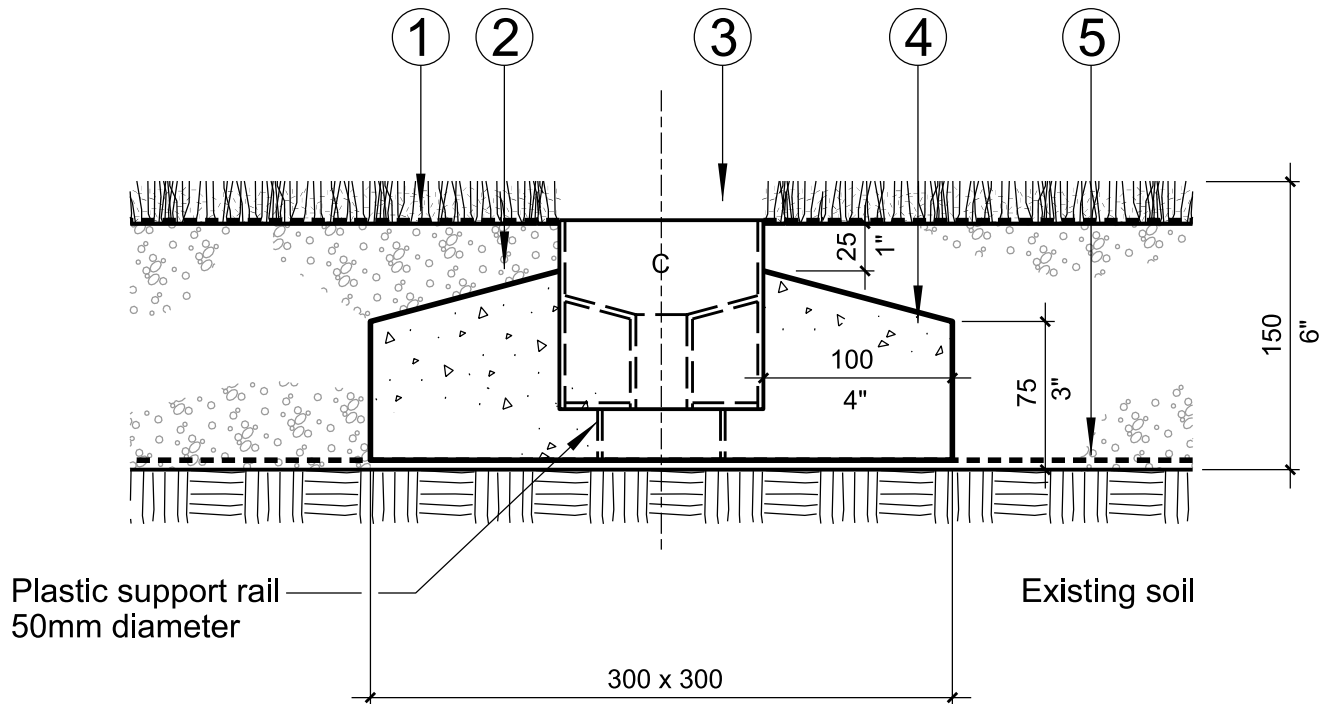
Standard installation for golf hole cups



Golf hole cup Ø108 x 100mm

Description

- 1 LML synthetic turf
- 2 LML granite stones
- 3 Golf hole cup Ø108 x 100mm
- 4 Mixed concrete (in bags)
- 5 LML TURF GEO geotextile membrane



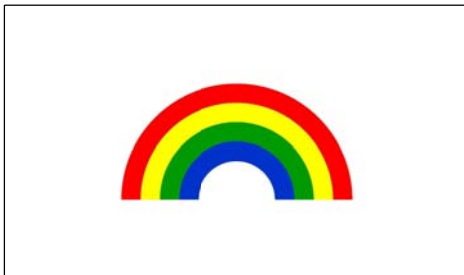


La référence en surfaces
synthétiques

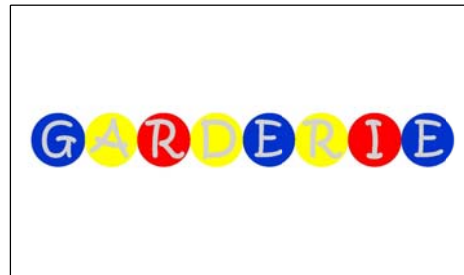
www.lmlpaysagiste.com

LML-12

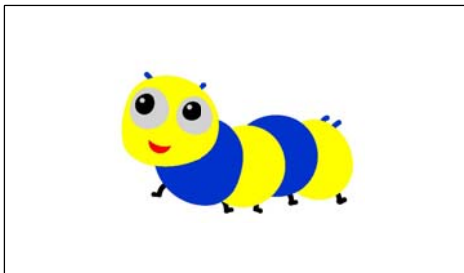
Logos for playgrounds and daycares



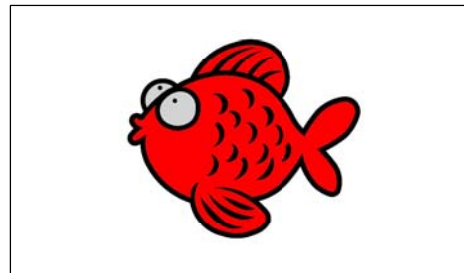
Rainbow (4' x 2')



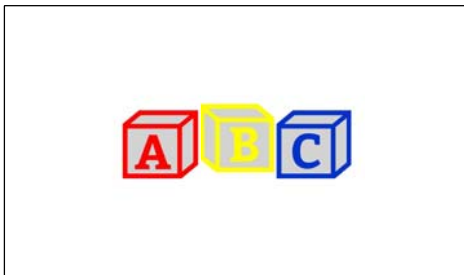
Daycare (7'-4" x 11")



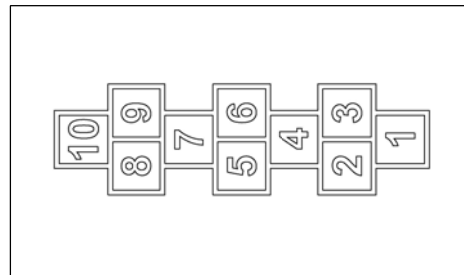
Caterpillar (4' x 2'-5")



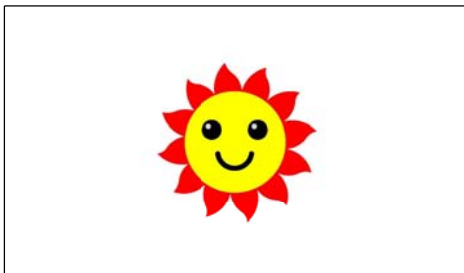
Fish (4' x 3'-5")



ABC (4' x 1'-3")



Hopscotch outline (6'-6" x 1'-11", white)



Sun (2'-9" x 2'-9")

NOTE

See supplier for details.